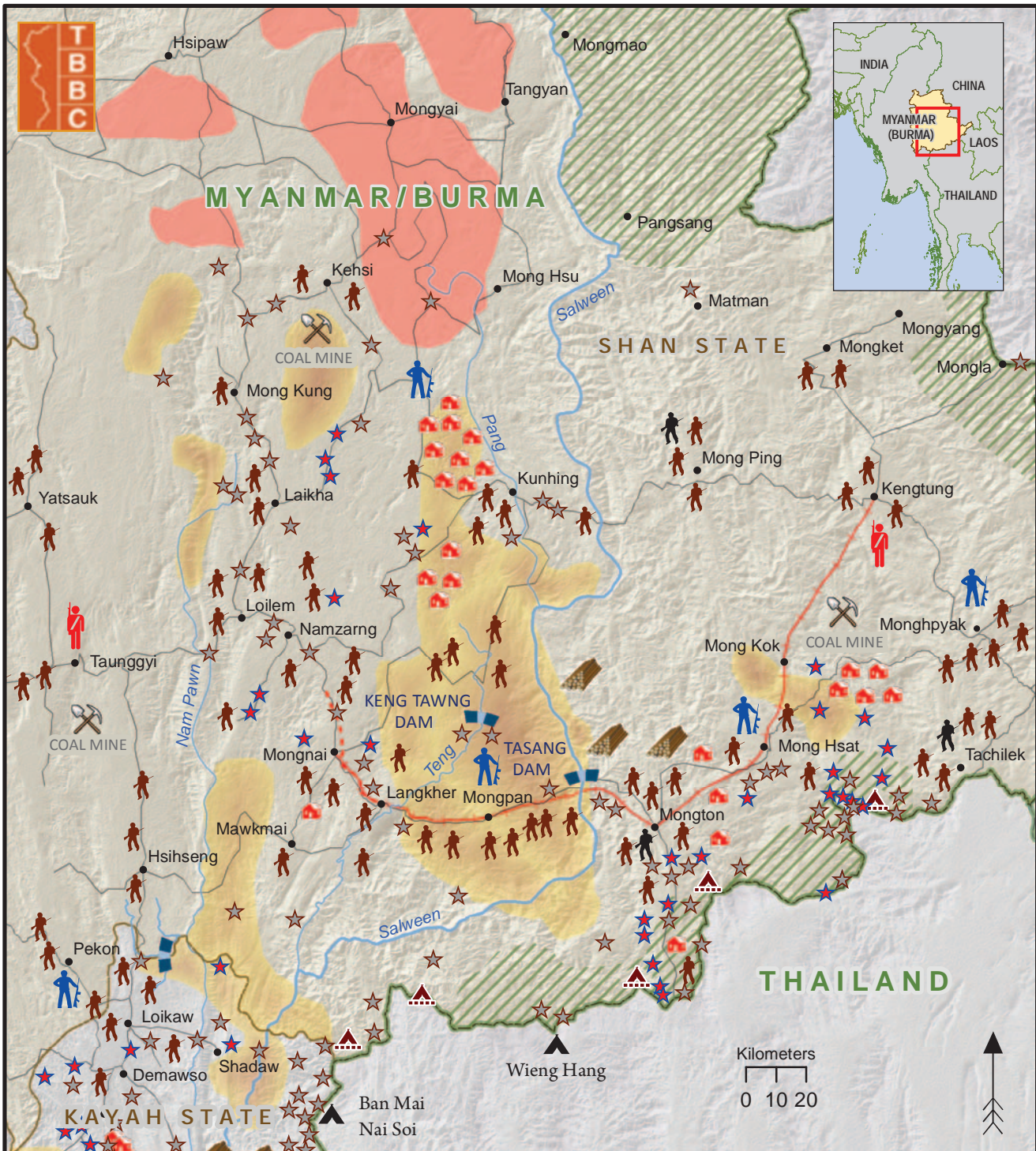


Map 7 : Southern and Central Shan State



| | | | | | |
|--|---------------------------------|--|---|---|-----------------------|
| | Tatmadaw Regional Command | | Refugee Camp | Development Projects Associated with Human Rights Abuses | |
| | Tatmadaw Military OPS Command | | International Boundary | | Logging |
| | Tatmadaw Battalion Headquarters | | State/Region Boundary | | Dam |
| | BGF/Militia HQ | | Rivers | | Mine |
| | Tatmadaw Outpost | | Roads | | Railroad Construction |
| | BGF/Militia Outpost | | Renewed Ceasefire Area (UWSA, NDA) | | Road Construction |
| | Displaced Village, 2011 | | Resumed Armed Resistance (SSA-N) | | |
| | IDP Camp | | Protracted Armed Resistance (SSA-S, PNLO) | | |